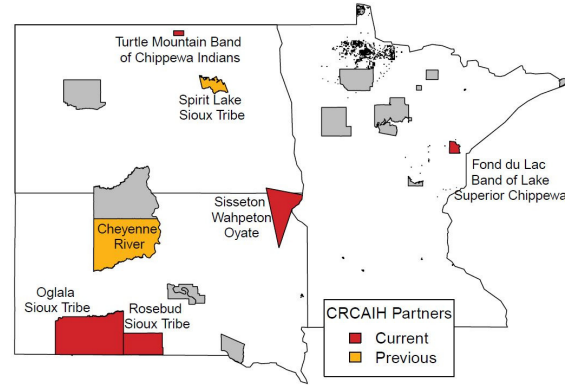





Collaborative Research Center for American Indian Health



Impact on Tribal Research Infrastructure



Helping tribes enact their vision

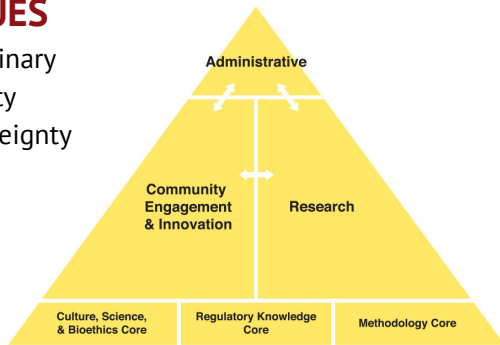
-  Support for dedicated tribal research staff
-  Assist with research codes & policy development
-  Implementation of tribally-run Institutional Review Boards
-  Facilitation of data management
-  Community Health Needs Assessments

VISION

CRCAIH promotes collaborative research partnerships with tribal communities, research institutions, and health care entities through capacity building to conduct innovative research that improves American Indian health

CORE VALUES

- Transdisciplinary
- Sustainability
- Tribal Sovereignty



Impact on Research

3 Large-Scale Research Projects

- Pediatric Asthma
- Kidney Donation Education
- Emergency Department Use

15 Pilot Grant Projects

47% of pilot grant principal investigators are American Indian



CRCAIH's Large-Scale Impact



CRCAIH investigators and tribal partners have received millions in additional funding to continue their work. CRCAIH has also had regional and national reach by:

- Holding 6 annual summits and 2 community conferences
- Speaking at regional and national conferences on the importance of tribal research infrastructure
- Developing and disseminating webinars, trainings, & toolkits
- Partnering with the National Congress of American Indians for additional trainings

Contact Info

605.312.6232
info@crcaih.org
www.crcaih.org

Also find us on social media



Project is supported by the National Institute on Minority Health and Health Disparities of the National Institutes of Health under Award Number U54MD008164

Publications

CRCAIH Cores & Divisions

- Angal, J., & Andalcio, T. (2015). CRCAIH Tribal IRB Toolkit. Collaborative Research Center for American Indian Health.
- Birger, C., Puumala, S., Around Him, D., & Villalobos, J. (2016). CRCAIH Research Management Toolkit. Collaborative Research Center for American Indian Health.
- Elliott, A. J., White Hat, E. R., Angal, J., Grey Owl, V., Puumala, S. E., & Baete Kenyon, D. (2015). Fostering Social Determinants of Health Transdisciplinary Research: The Collaborative Research Center for American Indian Health. *International Journal of Environmental Research and Public Health*, 13(1).
- Hanson, J. D., Jensen, J. L., Campbell, K., Chaudhary, K. R., & Puumala, S. E. (2016). Epidemiology of substance-exposed pregnancies at one Great Lakes hospital that serves a large number of American Indians. *American Indian & Alaska Native Mental Health Research: The Journal of the National Center*, 23(4). 44-62.
- Hanson, J. D., Nelson, M. E., Jensen, J. L., Willman, A., Jacobs-Knight, J., & Ingersoll, K. (2017). Impact of the CHOICES Intervention in Preventing Alcohol-Exposed Pregnancies in American Indian Women. *Alcoholism Clinical & Experimental Research*, 41(4), 828-835.
- Villegas, M., Around Him, D., Lucero, J. E., & Pytalski, S. C. (2016). All Our Relations: Assuring Tribal Research Ethics from Generation to Generation. *Journal of Healthcare, Science and the Humanities*, 6(1). 50-66.

CRCAIH Research Projects

- Best, L. G., O'Leary, R. A., O'Leary, M. A., & Yracheta, J. M. (2016). Humoral immune factors and asthma among American Indian children: a case-control study. *BMC Pulmonary Medicine*, 16(93)
- Best, L.G., Azure, C., Segarra, A., Enright, K.J., Hamley, S., Jerome, D., O'Leary, M.A., O'Leary, R.A., Parisien, A., Trottier, K., Yracheta, J.M., Torgerson, D.G. Genetic variants and risk of asthma in an American Indian population. (2017). *Annals of Allergy Asthma and Immunology*. 119(1):31-36.e1.
- Nickel, A. J., Puumala, S. E., & Kharbanda, A. B. (2018). Vaccine-preventable, hospitalizations among American Indian/Alaska Native children using the 2012 Kid's Inpatient Database. *Vaccine*, 36(7), 945-948.
- Pickner, W. J., Puumala, S. E., Chaudhary, K. R., Burgess, K. M., Payne, N. R., & Karbanda, A. B. (2016). Emergency Department Utilization for Mental Health in American Indian Children. *The Journal of Pediatrics*, 174. 226-231.
- Pickner, W.J., Ziegler, K.M., Hanson, J.D., Payne, N.R., Zook, H.G., Kharbanda, A.B., Weber, T.L., Russo, J.N., Puumala, S.E. (2017). Community Perspectives on Emergency Department Use and Care for American Indian Children. *Journal of Racial and Ethnic Health Disparities*.
- Puumala, S.E., Burgess, K. M., Karbanda, A. B., Zook, H. G., Castille, D. M., Pickner, W. J., & Payne, N. R. (2016). The Role of Bias by Emergency Department Providers in Care for American Indian Children. *Medical Care*, 54(6). 562-569.
- Weber, T. L., Ziegler, K. M., Kharbanda, A. B., Payne, N. R., Birger, C., & Puumala, S. E. (2018). Leaving the emergency department without complete care: disparities in American Indian children. *BMC Health Services Research*, 18, 267.
- Zook, H. G., Karbanda, A. B., Flood, A., Harmon, B., Puumala, S. E., & Payne, N. R. (2016). Racial Differences in Pediatric Emergency Department Triage Scores. *The Journal of Emergency Medicine*, 50(5). 720-727.
- Zook, H. G., Kharbanda, A. B., Puumala, S. E., Burgess, K. M., Pickner, W. J., & Payne, N. R. (2017). Emergency Department Utilization by Native American Children. *Pediatric Emergency Care*.
- Zook, H. G., Payne, N. R., Puumala, S. E., Burgess, K. M., & Kharbanda, A. B. (2016). Racial/Ethnic Variation in Emergency Department Care for Children with Asthma. *Pediatric Emergency Care*.

CRCAIH Pilot Grants

- Burnette, C. E., Roh, S., Liddell, J., & Lee, Y. (2018). American Indian women cancer survivors' needs and preferences: Community support for cancer experiences. *Journal of Cancer Education*.
- Burnette, C.E., Liddell, J., Roh, S., Lee, Y., & Lee, H.Y. (2018). Understanding the social and community support networks of American Indian women cancer survivors. *Ethnicity & Health*, 1-13.
- Fretts A.M., Huber C., Best L.G., O'Leary M., LeBeau L., Howard B.V., et al. (2018). Availability and Cost of Healthy Foods in a Large American Indian Community in the North-Central United States. *Preventing Chronic Disease*. 15:170302.
- McCarron, H., Griese, E. R., Dippel, E., & McMahon, T. R. (2018). Cultural and social predictors of substance abuse recovery among Native and non-Native pregnant and parenting women. *Journal of Psychoactive Drugs*.
- Horst Hauge, C., Jacobs-Knight, J., Jensen, J. L., Burgess, K. M., Puumala, S. E., Wilton, G., & Hanson, J. D. (2015). Establishing survey validity and reliability for American Indians through "think aloud" and test-retest methods. *Qualitative Health Research*, 25(6). 820-830.
- Liddell, J., Burnette, C.E., Roh, S., Lee, Y., (2018). Healthcare barriers and supports for American Indian women with cancer. *Social Work in Health Care*, 1-18.
- Roh, S., Burnette, C. E., & Lee, Y. (2018). Prayer and faith: Spiritual coping among American Indian women cancer survivors. *Health & Social Work*.
- Running Bear, U., Beals, J., Kaufman, C.E., Manson, S.M. (2017). Boarding School Attendance and Physical Health Status of Northern Plains Tribes. *Applied Research in Quality of Life*.
- Running Bear, U., Garrouette, E.M., Beals, J., Kaufman, C.E., & Manson, S.M. (2018). Spirituality and mental health status among Northern Plains tribes. *Mental Health, Religion & Culture*.